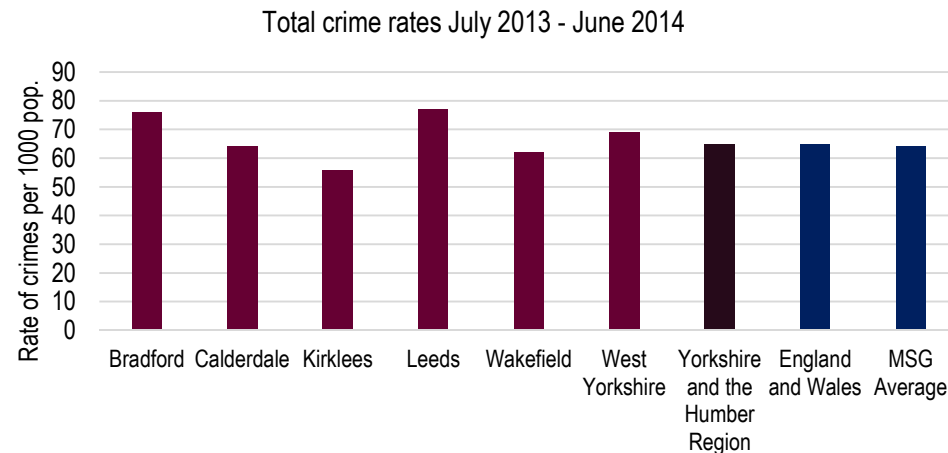
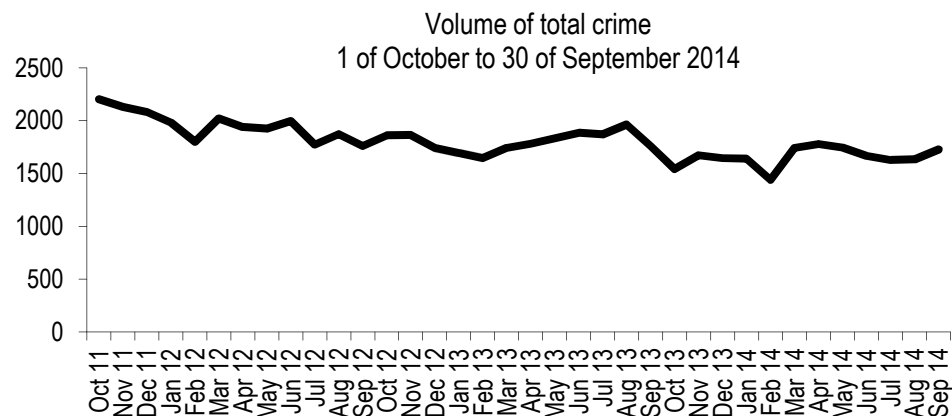


# OBJECTIVE: MAKE COMMUNITIES SAFER AND FEEL SAFER BY TACKLING ALL FORMS OF CRIME



Recorded Crime	West Yorks	Bradford	Calderdale	Kirklees	Leeds	Wakefield
12 mths to Sep 13	-3.7%	-0.1%	2.9%	-11.2%	-2.5%	-7.6%
12 mths to Sep 14	-6.5%	-3.9%	-7.3%	-6.1%	-7.5%	-8.3%
Volume (to Sep 2014)	152,194	39,090	12,524	23,442	57,290	19,848

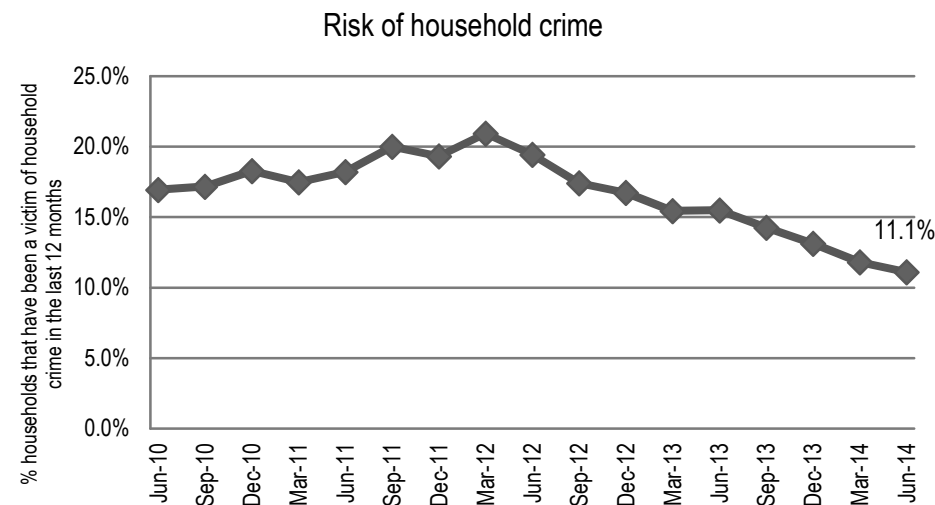
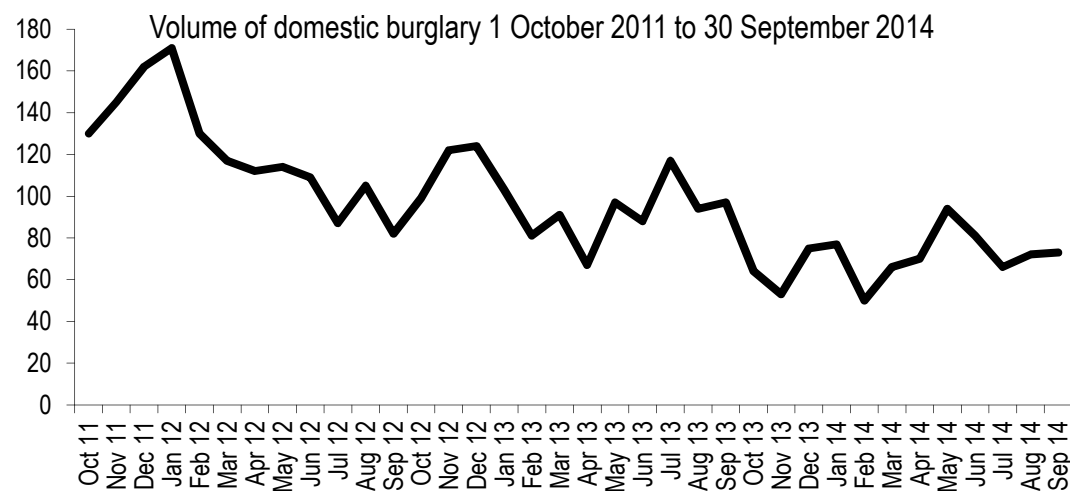
## COMMENTARY

- There were 152,194 crimes recorded in West Yorkshire between October 2013 and September 2014. This is a reduction of 10,573 on the previous 12 months which equates to 6%. In this quarter (July-September 2014) the volume of crime has reduced by 9.1% compared to the same period last year.
- The Police and Crime Plan contains an indicator for total crime rate, with the aim that West Yorkshire is better than similar police areas (known as MSGs\*). For the 12 months to June 2014, West Yorkshire was improving at a rate of 3.9% whilst the MSG average had actually increased by 2.5%, suggesting we are on track to achieve this. Similarly national and regional crime comparisons show that overall, West Yorkshire continues to reduce crime at a higher rate than the rest of England and Wales, and the Yorkshire and Humber region.
- Notable reductions in crime types in the 12 months to September 2014 could be seen in domestic burglary (13.5%), robbery (11.0%), theft of vehicle (9.2%) and criminal damage (7.3%).
- The detection rate for all crime is in line with the England and Wales as of March 2014.

## ACTION / RESPONSE

- The fact that West Yorkshire Police is recording less crime at a time when other forces are seeing increases is very positive. However I will continue to monitor crime levels and crime recording closely to ensure that we can be confident that crime is being reduced in West Yorkshire.
- The force have continued to invest in initiatives such as Operation Viper and which have contributed to a reduction in Serious Acquisitive Crime which is 14% lower this quarter (July – September) than it was the same time period last year.
- The OPCC has recently sent out just under 30,000 surveys to households across West Yorkshire to help measure feelings of safety. This should help identify what makes people feel safe or unsafe, identifying areas for improvement.
- As part of my Community Conversation during November, I held various public meetings and a web chat whereby a wide range of crime related issues were raised. Although many of these are already being tackled, I raised them with the force to ensure that good progress is being made, and will monitor them going forward.
- The latest HMIC PEEL inspection found West Yorkshire Police to be good at reducing crime and preventing offending but not so good at investigating offending which was assessed as requiring improvement – I will be working with the force to ensure areas for improvement are addressed.
- Since the HMIC crime data integrity inspection, the force have made a number of changes and continue to improve with regards to communication from the Chief Officers, withdrawal of non-compliant policies, training, and auditing as well as a variety of other areas.

## OBJECTIVE: REDUCE THE RISK OF DOMESTIC BURGLARY IN WEST YORKSHIRE



### COMMENTARY

- For the July-September period there was a reduction of 1,029 burglaries compared to the same period last year. This brings the level of reduction for the 12 months to September 2014 to -19.5%.
- The Police and Crime Plan contains a target for West Yorkshire to out-perform similar police areas. As at June 2014 the average reduction across the similar group was 5.5%, showing that West Yorkshire is performing better than its similar police areas and meeting the target set.
- As at June 2014 West Yorkshire stands at 6<sup>th</sup> in the similar group.
- The Crime Survey for England and Wales data to June 2014 identifies that 11.1% of households surveyed have been a victim of household crime showing reducing risk since March 2012 and having the second lowest risk of similar police areas.
- The outcome rate for domestic burglary is 20.1% for the year to September 2014. Although low, it was slightly higher than similar police areas for the year to June 2014.
- The Chief Constable recently commissioned a piece of work around the accurate recording of multiple occupancy crimes, taking cognisance of advice from the National Force Crime Registrar and benchmarking with other forces. This has led to a change in policy in that multiple crimes are required to be recorded for houses which are occupied by multiple persons, e.g. students or professional colleagues.

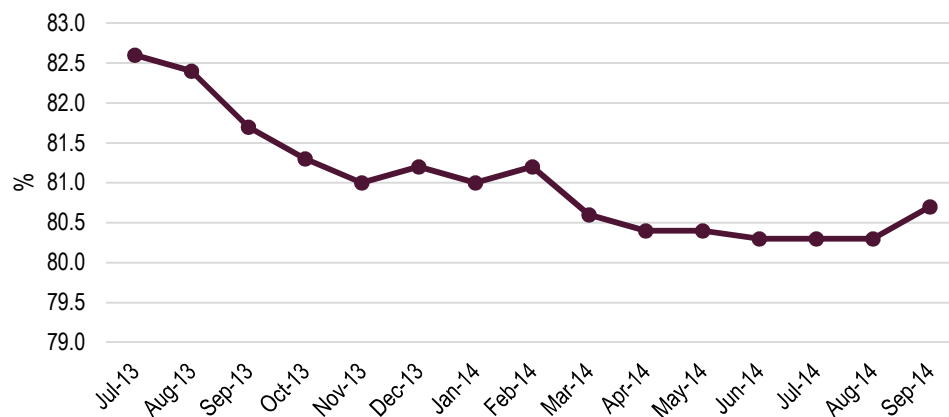
Recorded domestic burglary	West Yorks	Bradford	Calderdale	Kirklees	Leeds	Wakefield
12 mths to Sep 13	-11.8%	+2.2%	-5.0%	-22.6%	-14.5%	-19.4%
12 mths to Sep 14	-19.5%	-19.8%	+2.1%	-19.3%	-20.9%	-28.7%
Volume (to Sep 14)	10,408	2,966	885	1,700	4,016	841

### ACTION/RESPONSE

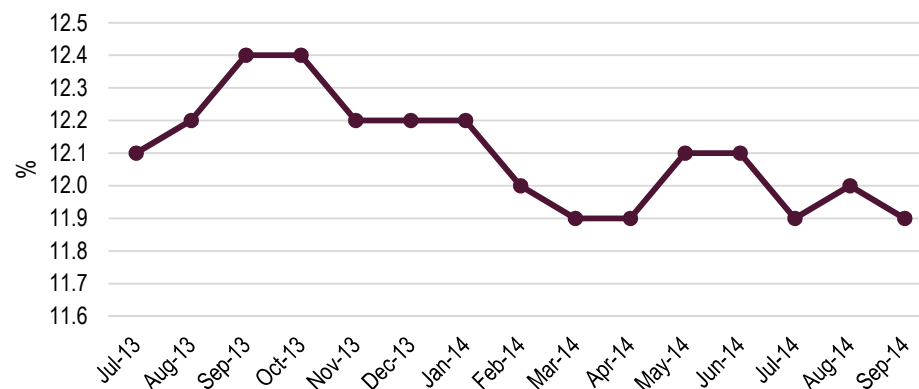
- With the continued apparent good reductions in domestic burglary across West Yorkshire, my conversations have focussed more around a couple of issues that may affect these figures: the integrity of crime recording and the change to the counting of crimes occurring in multi occupancy houses. Operation Viper continues to target resources to the areas of most need.
- The police have implemented monthly audits to measure compliance with crime recording standards. In August 2014, 85.2% of burglary incidents were correctly recorded as crimes, while in September this had increased to 87.6%. While crime recording has clearly improved there is still some way to go with 12% of burglaries in the sample chosen in September not being recorded. Crimes identified through the audit process have been backdated to April 2014 and are included in performance figures.
- The impact of changes to recording of burglaries in multi occupancy dwellings is not as large as initially thought, with approximately 300 extra offences a year anticipated in Leeds. Including these crimes should allow for more effective targeting of resources to problem areas.
- The recent HMIC crime inspection recognises the understandable focus on burglary and acknowledges that this focus is working.

# OBJECTIVE: RESPOND TO REPORTS OF ANTI-SOCIAL BEHAVIOUR (ASB) IN A WAY THAT VICTIMS AND COMMUNITIES ARE HAPPY WITH

Satisfaction with anti-social behaviour service delivery



Proportion of residents who believe that ASB has increased in their local area



% of residents that are satisfied with ASB service delivery	West Yorkshire	Bradford	Calderdale	Kirklees	Leeds	Wakefield
12 mths to Sept 13	81.7%	80.0%	77.7%	81.0%	83.2%	83.6%
12 mths to Sept 14	80.7%	74.0%	78.9%	83.6%	84.4%	81.0%

% of residents saying ASB has got worse over the last 12 months	West Yorkshire	Bradford	Calderdale	Kirklees	Leeds	Wakefield
12 mths to Sept 13	12.4%	15.9%	11.1%	10.1%	11.3%	12.3%
12 mths to Sept 14	11.9%	16.0%	8.1%	10.2%	11.3%	11.1%

## COMMENTARY

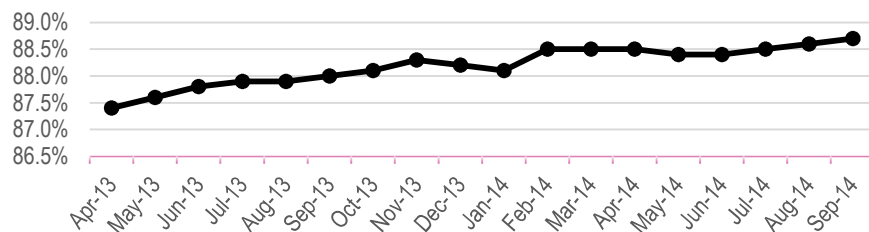
- 80.7% of ASB victims are now satisfied with the service that they received in West Yorkshire. This steadily increased over the past few years reaching a peak in June 2013, however it deteriorated recently. Bradford shows a significant 6% reduction.
- The proportion of people who believe that ASB has increased in their local area has remained fairly constant, only deviating by 0.5% in the last year.
- For the 12 months to June 2014 West Yorkshire had 31.5 ASB incidents per 1,000 population (England and Wales 36.8).

## ACTION/RESPONSE

- Previously I have raised concerns with the Chief Constable regarding the poor levels of satisfaction with ASB service delivery in Bradford. I was assured that the force were addressing this complex issue through partnership working, increasing attendance at incidents and identification of vulnerability, and creating a Nuisance Motorcycle Team. The rate of reduction in satisfaction has now slowed. I am told that actions in Bradford have continued, and are now giving additional focus to environmental issues such as litter and fly tipping. I will continue to monitor this closely and have asked for a further update in 3 months time.
- The recent HMIC PEEL inspection graded West Yorkshire as good at effectively tackling anti-social behaviour, noting a number of good initiatives with a focus on prevention and reduction in and around schools, good partnership approaches with agencies seeing ASB as part of their core business, and evidence that ASB reports received by partner hubs are risk assessed (around vulnerability, repeat victims, hate crime and mental health), correctly recorded and victim-centred.
- As part of my community conversation I held a public web chat on 10 November 2014. Although I was already aware of a couple of the issues, many people involved in the web chat told me about a wide range of ongoing crime and ASB being faced by those living around and using Lund Park in Keighley, and the affect it was having on the wider community. I immediately raised these concerns with the District Commander and asked for further feedback if problems are not addressed.

## OBJECTIVE: IMPROVE THE QUALITY OF SUPPORT PROVIDED TO VICTIMS OF CRIME AND INCIDENTS

Overall satisfaction levels  
April 2013 - September 2014



Satisfaction with service delivery	12 months to September 2013	12 months to September 2014	Trend over time
Overall	88.0%	88.7%	+0.7%

### COMMENTARY

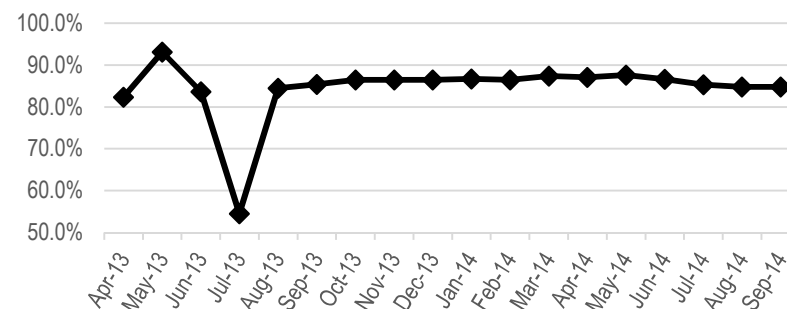
- In general the overall satisfaction (for victims of burglary, violent crime and vehicle crime) within West Yorkshire has been steadily improving since mid-2010 and now stands at 88.7% which is above the national average.
- The gap between satisfaction for BME and White victims is also decreasing as a result of the satisfaction of BME victims rising at a faster rate than White victims.
- West Yorkshire Police's stronger areas are "ease of contact" (97.4%) and "treatment" (95.8%), however there is more of an issue with "follow up" (80.8%), the most significant deterioration is in the Wakefield District which is currently at 73.0%.

### ACTION/RESPONSE

- Continued good performance has been seen in this area and with the move to PCCs commissioning of victims' services, more scrutiny than ever will be placed on victim satisfaction. This is in line with recent HMIC inspections which state that the force need a more victim centred approach.
- West Yorkshire Police have recently started using victim's contracts which ensure that the victims of crime receive the level of service that they expect. This is a fairly new development and I will be following its progress closely.
- I have also raised the reduction in Wakefield's "follow-up" satisfaction rate, and the force will continue to monitor this closely.

## OBJECTIVE: IMPROVE THE OUTCOMES FOR VICTIMS OF HATE CRIME INCIDENTS

Racist Incidents satisfaction levels  
April 2013 - September 2014



Satisfaction with service delivery	12 months to September 2013	12 months to September 2014	Trend over time
Racist incidents only	85.4%	84.8%	-0.6%

### COMMENTARY

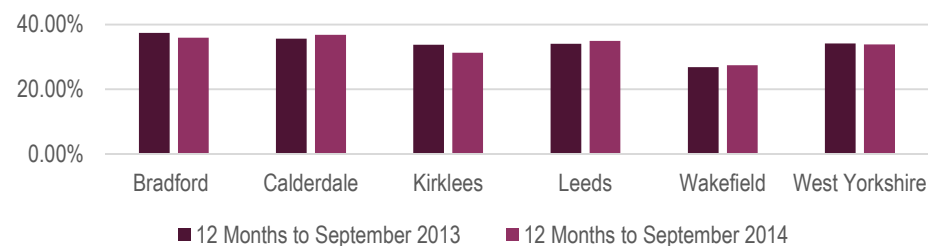
- There has been a slight reduction in the satisfaction of victims of racist incidents of 2.6% since the 2013/14 outturn.
- The reduction is most significant in Kirklees which has dropped by 9.0% to 76.7%. Although the small sample size means that this is not statistically significant it is still a concern.
- The force performs well with regards to "ease of contact" and "treatment," however with regards to racist incidents there are also lower satisfaction levels with regards to "time taken for police to arrive" as well as "actions" and "follow-up".

### ACTION/RESPONSE

- Having noticed the reduction of satisfaction, I requested that the force carried out some analytical work to identify the factors driving this particularly in Kirklees. The force have completed this and implemented an action plan to improve the satisfaction rates, which I will be monitoring closely. The action plan includes monitoring incident logs for compliance, identifying developmental needs and getting the expertise to the front end of delivery.

## OBJECTIVE: PROTECT THOSE WHO ARE AFFECTED BY DOMESTIC ABUSE

Repeat victim rate for domestic crime across West Yorkshire



	12 months to Sept. 2013	12 months to Sept. 2014	+ / - %
Bradford	37.4%	35.9%	-1.5
Calderdale	35.6%	36.8%	+1.2
Kirklees	33.7%	31.3%	-2.4
Leeds	34.0%	34.9%	+0.9
Wakefield	26.8%	27.4%	+0.6
West Yorkshire	34.1%	33.8%	-0.3

### COMMENTARY

- The statistics above show that the repeat rate for victims of domestic crime has generally stayed stable with the biggest change being in Kirklees which has reduced by 2.4%.
- It is also important to remember that there has been an increased emphasis on identifying the victim and the perpetrator in order to improve the analysis of repeat victimisation. This is seen as a positive move as it improves the possibility of identifying “repeat victims” and leads to a more protective service.

### ACTION / RESPONSE

- The increase in repeat victimisation rates in Calderdale has been raised previously and it should be noted that Calderdale have actually reduced their repeat victimisation rate in recent months however this is not yet reflected in the 12 monthly figures.
- In the past the force has been criticised for being inconsistent in its domestic abuse processes however the recent HMIC PEEL inspection has since found evidence that WYP is now effectively managing domestic abuse investigations. Investigation supervision is good, with positive action taken in nearly all cases. Furthermore; once vulnerable and repeat victims are identified, appropriate action is taken to ensure the correct level of service.

## OBJECTIVE: INCREASE THE IDENTIFICATION OF THOSE CHILDREN AT RISK OF HARM

West Yorkshire			
	April-Sept. 2013	April-Sept. 2014	Trend over Time
Volume of safeguarding activity	6,114	6,532	No Change

### COMMENTARY

- Activities included in this measure range from investigations, arrests for child abuse (physical, emotional, sexual and neglect), child protection conferences/review conferences, children removed from home, provision of information to family law courts and for child licences for children returning home (placement with parents).
- The out-turn result for 2013/14 identified 12,037 children supported by safeguarding activity during the year, rising to 12,089 to September 2014.

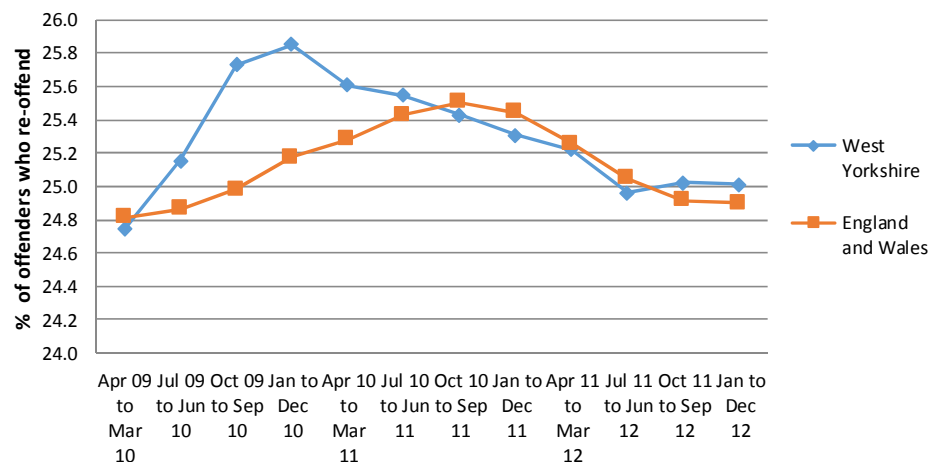
### ACTION / RESPONSE

- I have recently met with safeguarding experts from across West Yorkshire to discuss how child sexual exploitation (CSE) can be tackled better.
- Following the Rotherham report I have met with the Deputy Chief Constable to seek assurances that all recommendations, where applicable are implemented in West Yorkshire.
- I am supporting a proposal from the Directors of Children Services on behalf of the CSE Strategy group to tap into the £1M innovation fund focussing on engagement in schools, supporting victims, providing out of district sanctuaries and a data tracking exercise.
- I have made an extra £3.5M available to West Yorkshire Police for increased capacity to deal with CSE, human trafficking and cyber-crime.
- This is reflected in the HMIC Peel inspection which noted that West Yorkshire Police had reviewed the force strategic assessment which now had an increased prioritisation for these priority areas.
- The Inspection also addresses criticisms in the previous crime report regarding West Yorkshire Police's lack of focus on “hidden and unreported crimes”.

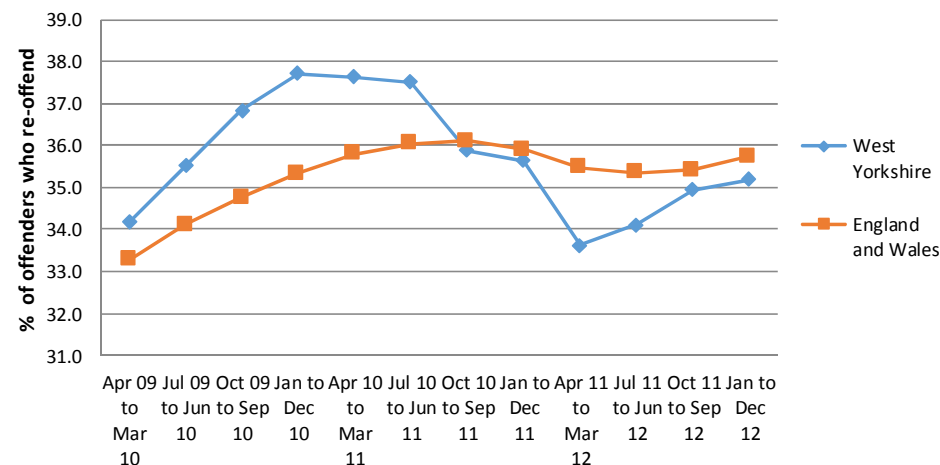


# OBJECTIVE: REDUCE THE RE-OFFENDING OF PERSISTENT CRIMINALS WHO CAUSE HARM IN OUR COMMUNITIES

### Proven re-offending rates for adults



### Proven re-offending rates for young people



Adult proven re-offending rates	West Yorks	Bradford	Calderdale	Kirklees	Leeds	Wakefield
12 mths to Dec 11	25.3%	25.7%	23.1%	24.1%	25.8%	25.7%
12 mths to Dec 12	25.0%	24.4%	23.4%	23.6%	26.3%	25.1%
Number of re-offenders	5,316	1,207	371	786	2,126	826

Youth proven re-offending rates	West Yorks	Bradford	Calderdale	Kirklees	Leeds	Wakefield
12 mths to Dec 11	35.6%	34.1%	33.5%	29.6%	37.6%	42.7%
12 mths to Dec 12	35.2%	34.7%	40.4%	36.0%	34.7%	33.3%
Number of re-offenders	772	186	69	122	318	77

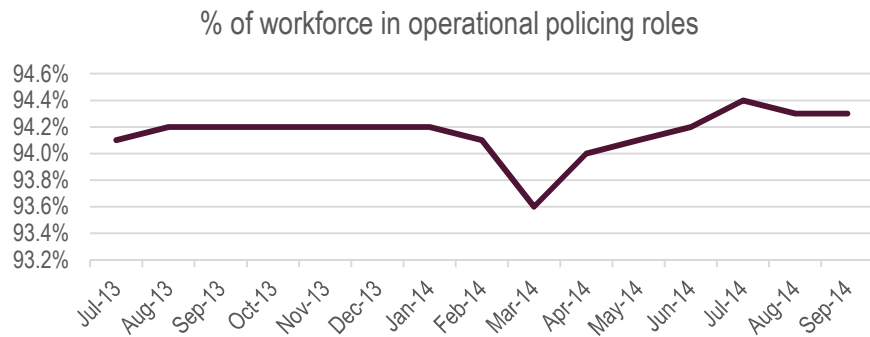
## COMMENTARY

- These re-offending measures are based on all adult and young offenders in West Yorkshire and draws on data published by the Ministry of Justice.
- The latest data for adults, for the 12 months to December 2012, stood at 25.0%, and shows a stable re-offending rate across time. This is slightly lower than the national average.
- The latest data for young people, for the 12 months to December 2012, stood at 35.2%, and shows a stable re-offending rate across time. This is slightly higher than the national average.
- The re-offending rate for young people in Wakefield has reduced over time while in Kirklees it has increased.

## ACTION/RESPONSE

- The police and other partners are continuing with Integrated Offender Management (IOM), looking at new ways for neighbourhood policing teams to engage with partners and communities to deal with offenders. The IOM team was recently praised by the HMIC PEEL inspection, who found passionate and focussed staff and use of victim-centred restorative justice with convicted offenders.
- The recent HMIC PEEL investigation also highlighted that the police is leading a partnership based pilot for tagging prolific offenders released from prison with **Global Navigation Satellite System** tags, which allow for real time tracking and management of their behaviour, and also mentioned the effective partnership work on intervention pathways to remove triggers for re-offending prior to release from prison into the community. I am also a member of the Strategic Group for the South and West Yorkshire resettlement consortia project, looking to improve the resettlement outcomes of young people leaving custody.
- A recent joint inspection of Wakefield Youth Offending Team led by HMI Probation acknowledged that work to deliver interventions to reduce re-offending was satisfactory, performance has improved and good quality work was delivered which was designed to improve engagement.
- I continue to work with those working in the re-offending arena to help minimise the impact of the changes to the re-offending landscape on them.

## OBJECTIVE: MAXIMISE THE PROPORTION OF POLICE OFFICERS ENGAGED IN OPERATIONAL ACTIVITY



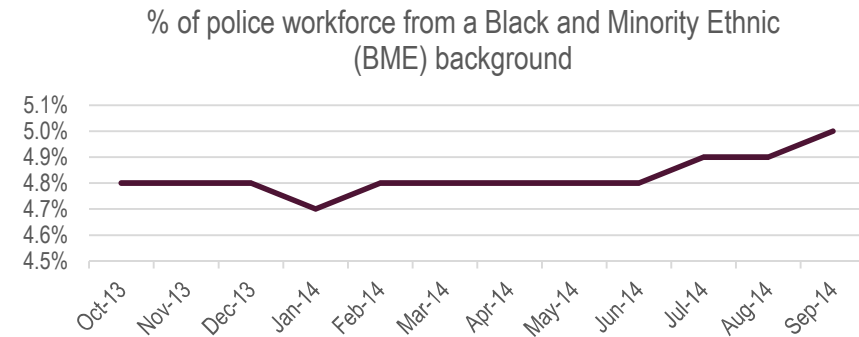
### COMMENTARY

- The proportion of the West Yorkshire Police workforce engaged in operational activity is consistently high and as of September 2014 stood at 94.3%.
- This stability is good given the savings that the police are having to make (20% of its budget between 2011-2015); it is encouraging that WYP now spends a lower percentage of its budget on operational front line than its most similar forces, whilst maintaining a high proportion of its workforce in operational roles.

### ACTIONS/RESPONSE

- In addition to the funds that I have made available to recruit more police officers and PCSOs, I have also supported the recent recruitment campaign for special constables which has been a great success so far with 393 special constables being recruited so far this year.
- The 2014 HMIC Valuing the Police inspection noted that the force uses a variety of methods to understand demand, and that this was particularly impressive with regards to local neighbourhood teams enabling the force to make the most effective use of its resources and serve local communities better. In addition to this the recent HMIC PEEL inspection noted that WYP was good at providing an effective and efficient service, which is evident in high victim satisfaction and falling crime levels.
- HMIC have also surveyed people nationally and found that in West Yorkshire 18% of people said they'd seen a police officer more often than 12 months ago, and 12% said they felt safer from crime, both of these are better than the national average.

## OBJECTIVE: STRIVE FOR A POLICE WORKFORCE THAT IS REPRESENTATIVE OF THE COMMUNITIES IT SERVES



Workforce type	BME	White	Not stated	% BME
Police officer	246	4,638	8	5.0%
Police staff	1144	3,697	11	3.7%
Special constables	63	585	12	9.7%
Volunteers	24	163	23	12.8%
<b>Total</b>	<b>477</b>	<b>9,083</b>	<b>54</b>	<b>5.0%</b>

### COMMENTARY

- The proportion of workforce from a BME background has been increasing over the past few years, however it has stalled slightly during 2013 and 2014, due to reduced recruitment during this period. That said there have been recent improvements as a result of the recruitment of special constables.
- The percentage of the workforce from BME background has risen to 5.0%, which is still disproportionate to the population but is improving the gap slightly.

### ACTION/RESPONSE

- West Yorkshire Police has actively tried to encourage people from BME backgrounds to join the police in order to be more representative of the diverse communities within West Yorkshire. The latest recruitment of special constables has increased the BME percentage from 9.1% to 9.7% which is a significant improvement.