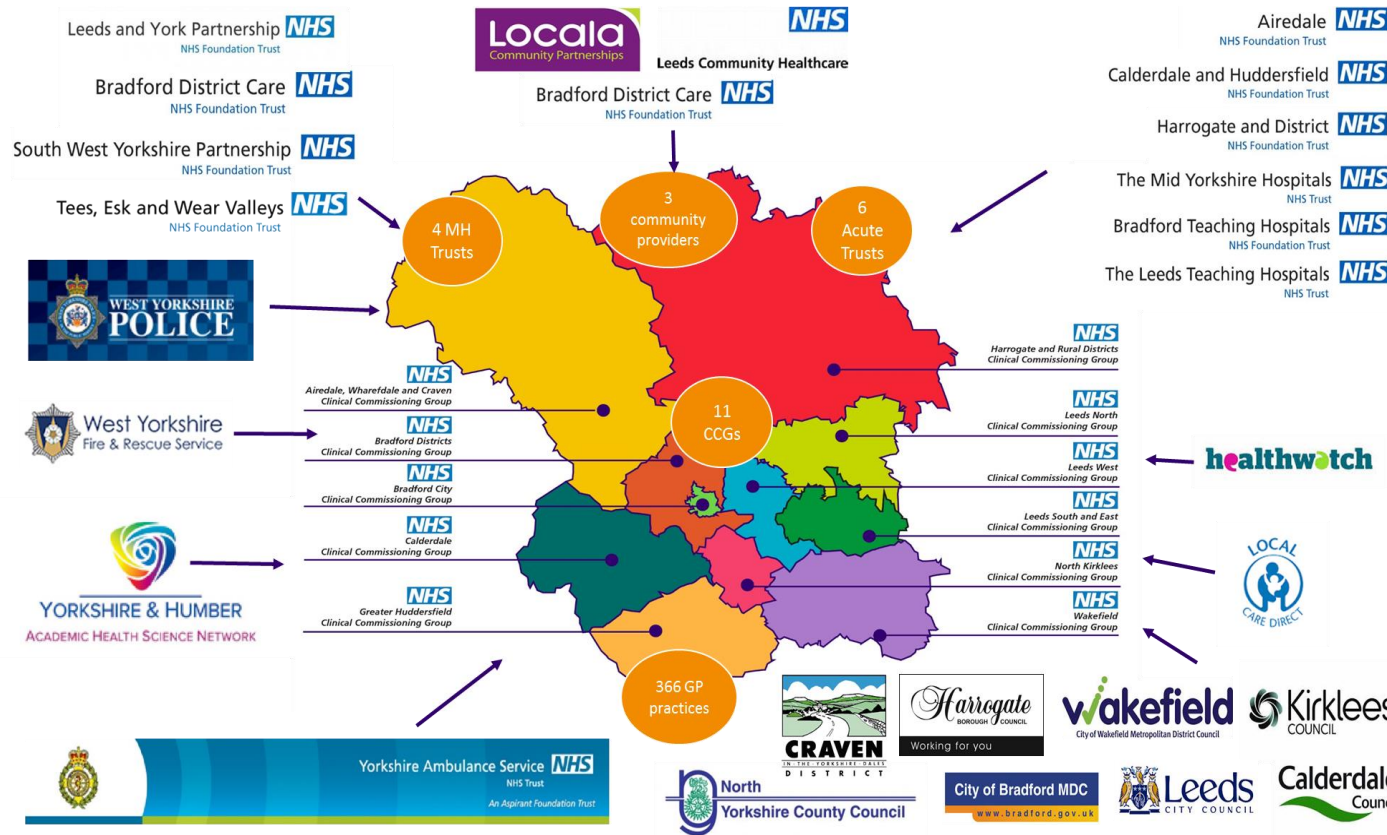


Sustainability, Transformation, Planning

WEST YORKSHIRE AND HARROGATE
SUSTAINABILITY TRANSFORMATION PLAN (STP)



Serving a population of 2.64m

With a total allocation of £4.7bn across health by 20/21

With a health and social care workforce of 113,000

Plus....

- 650 Care homes
- 319 Domiciliary care providers
- 10 hospices
- 8 large independent sector providers
- Thousands of Voluntary & Community Sector organisations